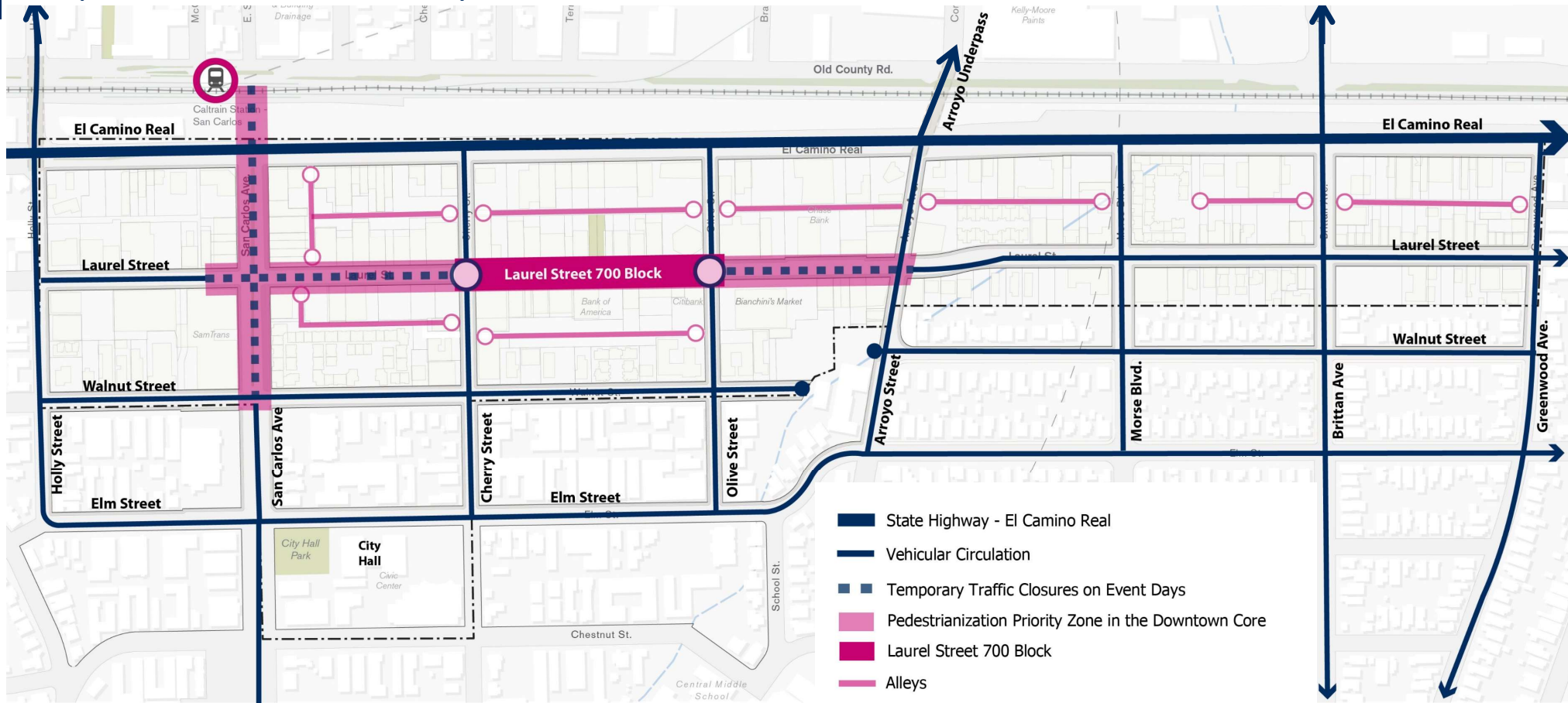


Downtown Core Street Design – Refined Street Designs

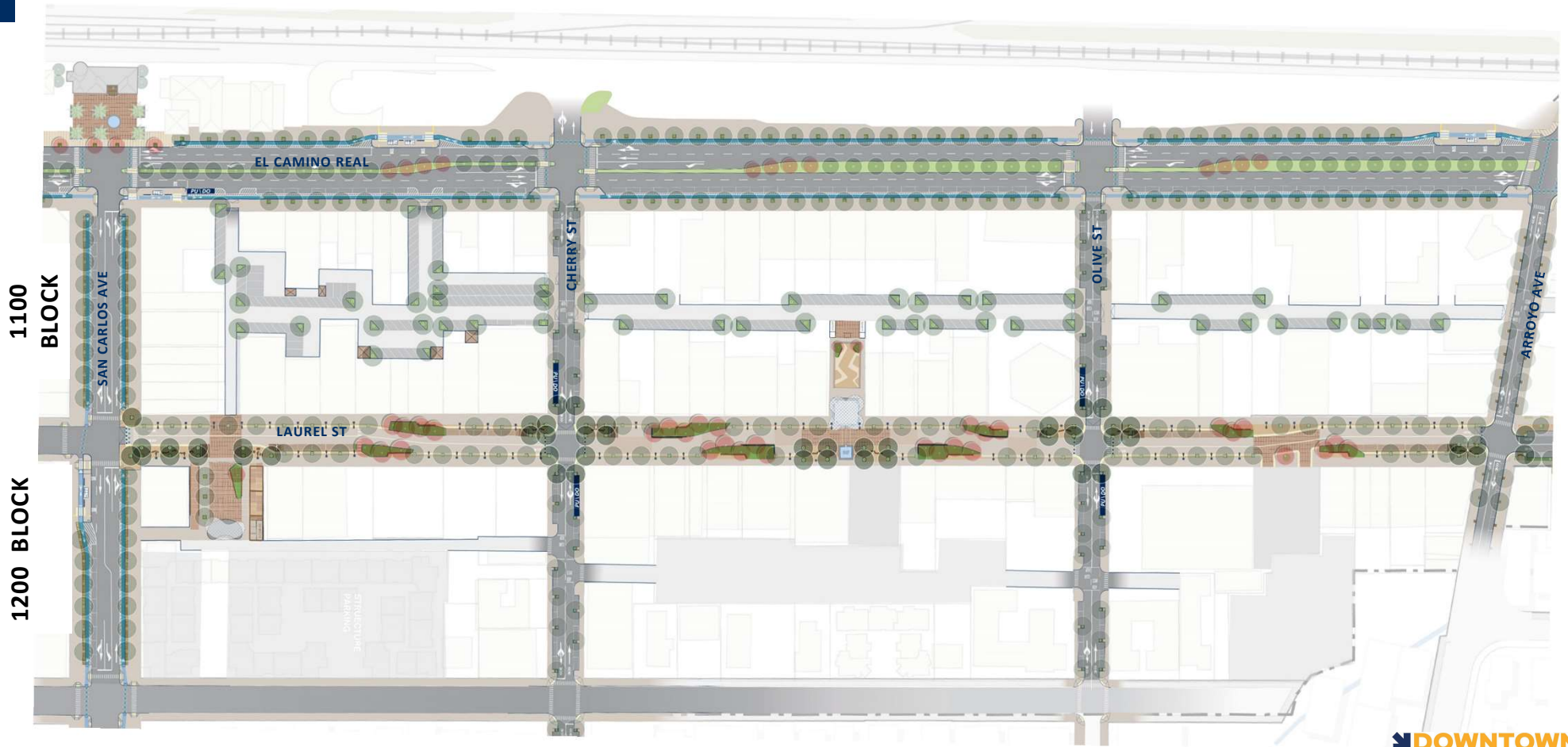
EXISTING CIRCULATION

Proposed Pedestrian Priority Zone with Permanent Closure of 700 Laurel Block



DRAFT ILLUSTRATIVE STREETSCAPE LAYOUT (The “Downtown Core”)

LAUREL STREET 600, 700 & 800 BLOCKS AND SAN CARLOS AVENUE 1100 & 1200 BLOCKS

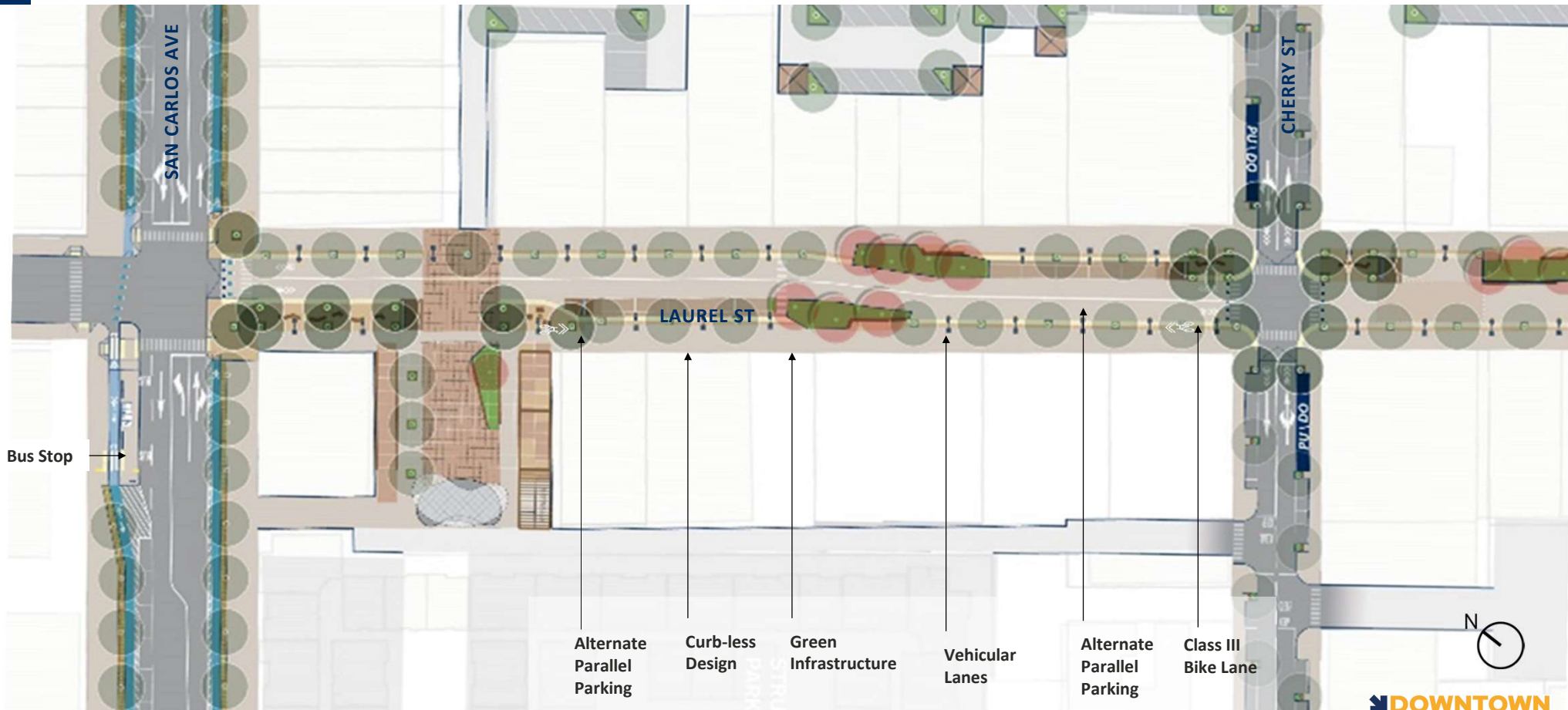


DRAFT ILLUSTRATIVE STREETSCAPE LAYOUT (South of Arroyo Ave)

LAUREL STREET 900, 1000 & 1100 BLOCKS (SoLa District)



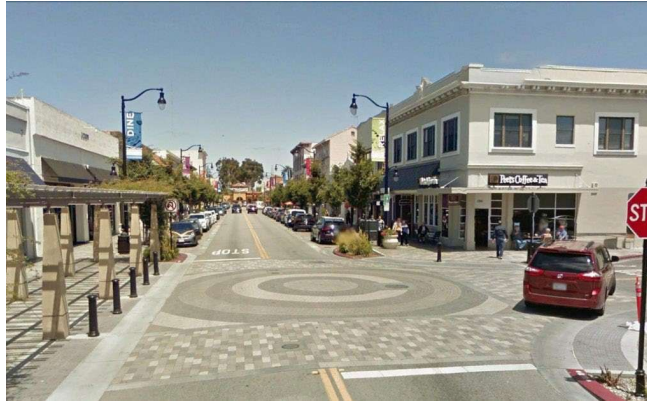
600 BLOCK OF LAUREL STREET



EXAMPLES OF ACTIVITIES AS POSSIBLE WAYS TO ACTIVATE THE 600 BLOCK OF LAUREL STREET



TREES FOR SHADE



MATERIALS TO CREATE PLAZA EXPERIENCE



POP-UP MARKET
IN WHEELER PLAZA



EXPANDED OUTDOOR DINING AND PUBLIC SEATING IN WHEELER PLAZA

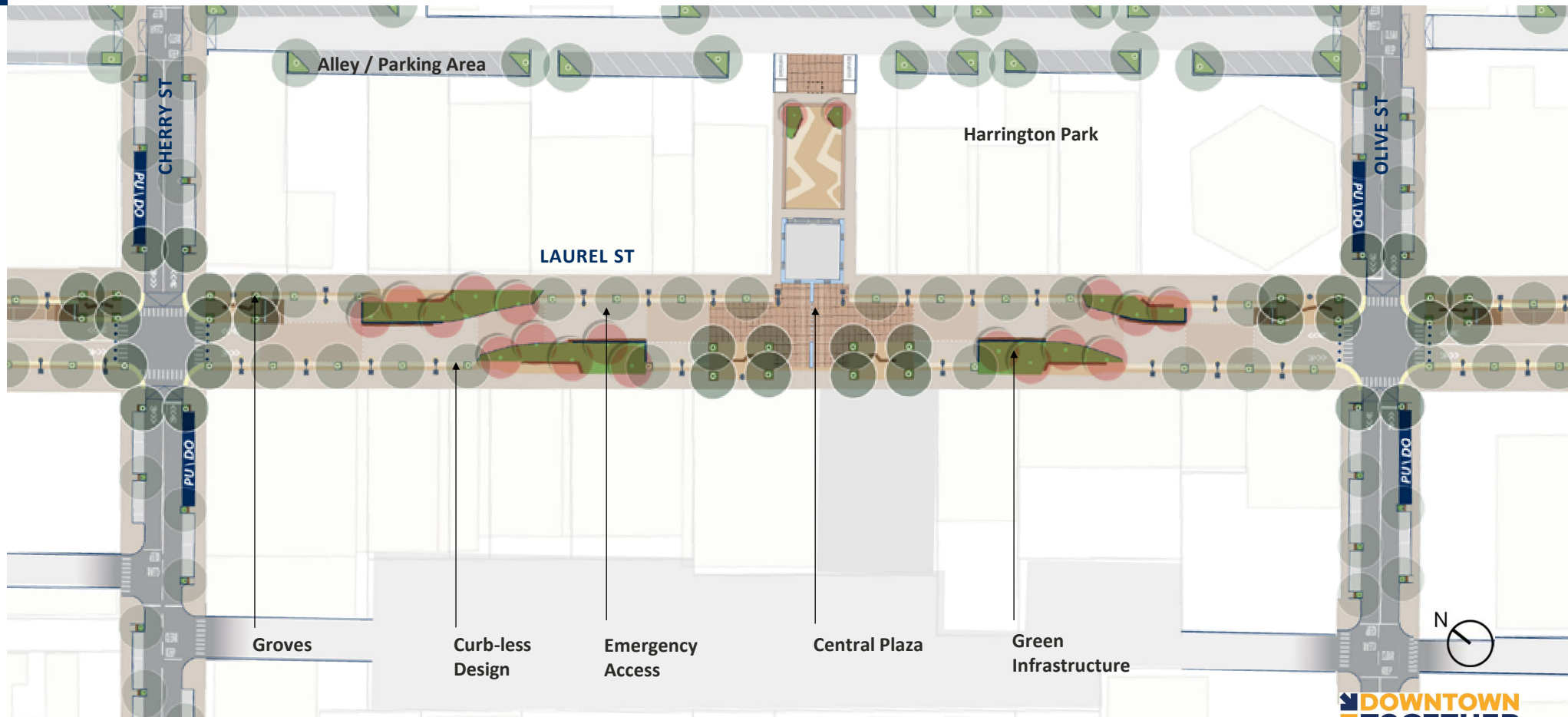


SPACE FOR PERFORMANCES IN
WHEELER PLAZA



MULTI-PURPOSE PROGRAMMING
IN WHEELER PLAZA

700 BLOCK OF LAUREL STREET - PEDESTRIAN PLAZA



EXAMPLES OF ACTIVITIES AS POSSIBLE WAYS TO ACTIVATE THE 700 BLOCK OF LAUREL STREET



WATER FEATURE



PUBLIC SEATING



PUBLIC ART



EVENT PLAZA/ PROGRAMMING

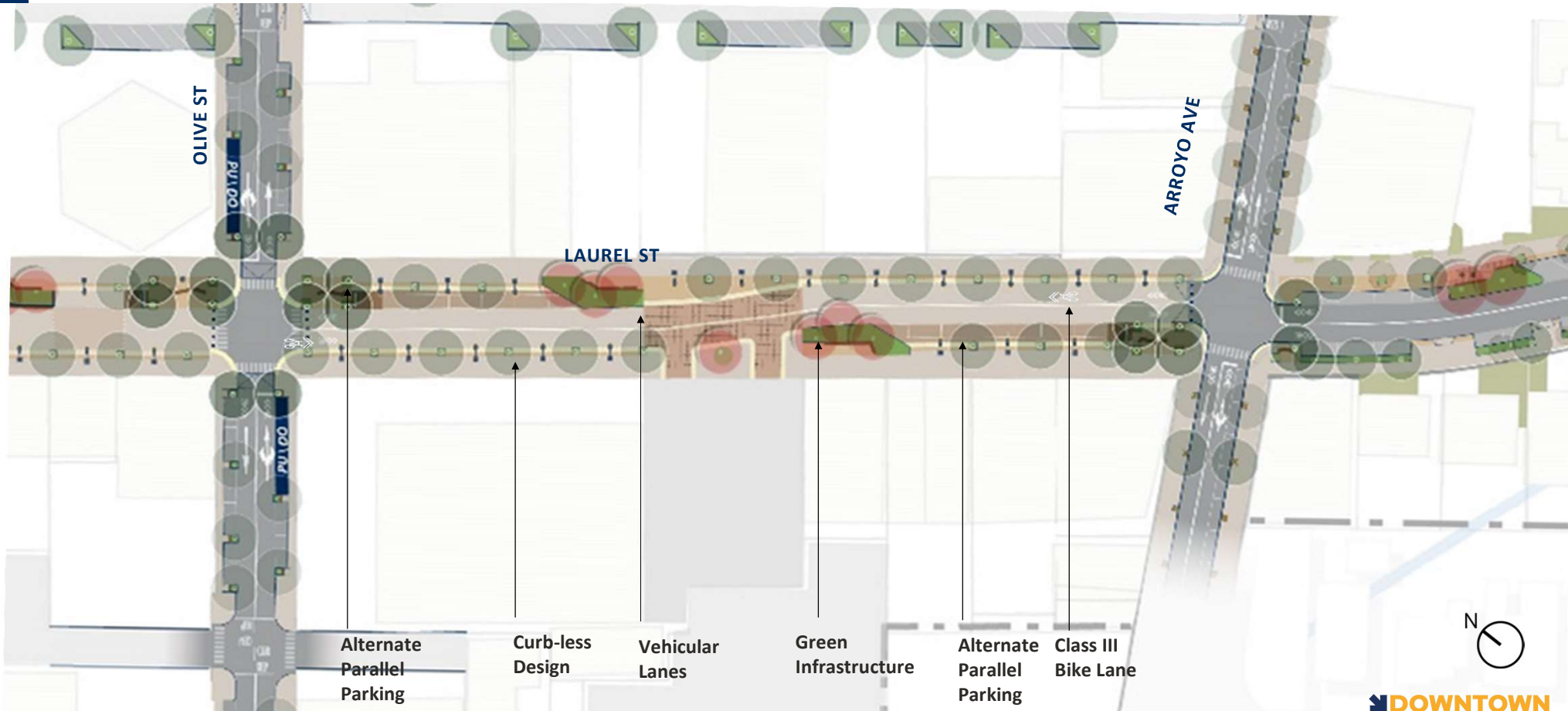


STAGE/ PERFORMANCE AREA



OUTDOOR DINING

800 BLOCK OF LAUREL STREET



EXAMPLES OF ACTIVITIES AS POSSIBLE WAYS TO ACTIVATE THE 800 BLOCK OF LAUREL STREET



WIDER SIDEWALKS



STORM WATER MANAGEMENT



PUBLIC SEATING



FLEXIBLE USE / SPECIAL PAVING



SIDEWALK DINING



TREES FOR SHADING

WHAT WE HEARD SINCE COUNCIL LAST MET

ON JUNE 10, 2024

COUNCIL FEEDBACK – JUNE 10, 2024

San Carlos Ave:

- North side condition too constrained
- OK to eliminate median strip, if additional space is needed
- OK to lose parking on the south side
- Concerns about losing lanes

El Camino Real:

- Concerns about lose parking spaces on the west side

Laurel Street:

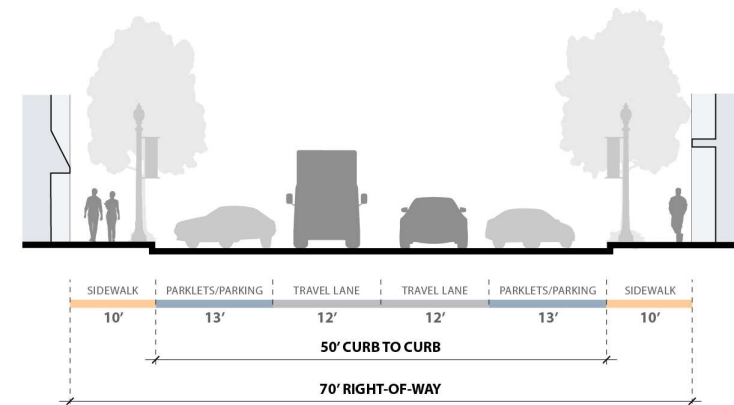
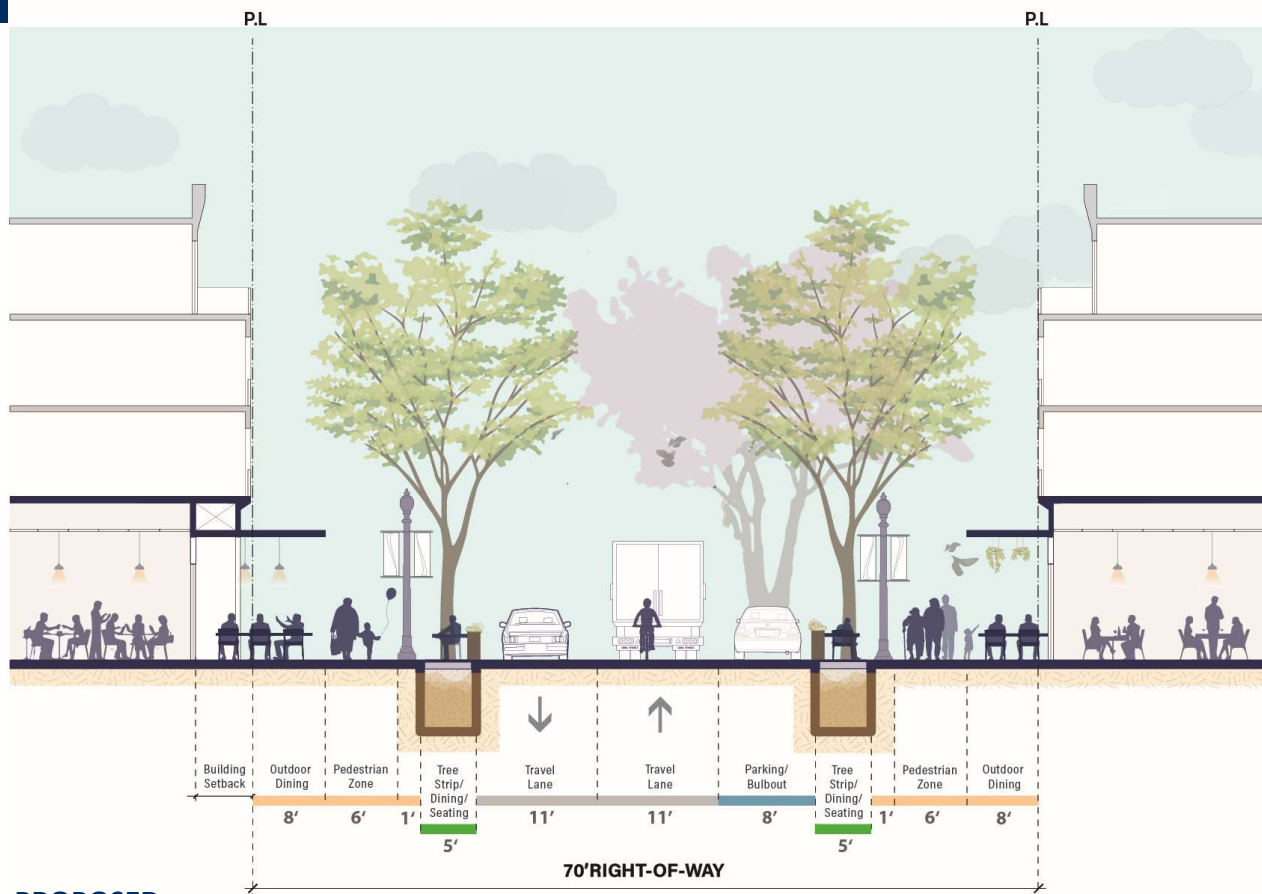
- 600 block – make sure there is sufficient space for outdoor dining (frontage plus tree strip)
- Curbless configuration on 600 & 800 need moveable barriers for outdoor dining
- Wheeler – flexible use: multi-use pavilion, change activities with the season, tables and chairs, pods OK
- 700 block – Centennial Plaza – pull the pavilion out a little more

Other Streets:

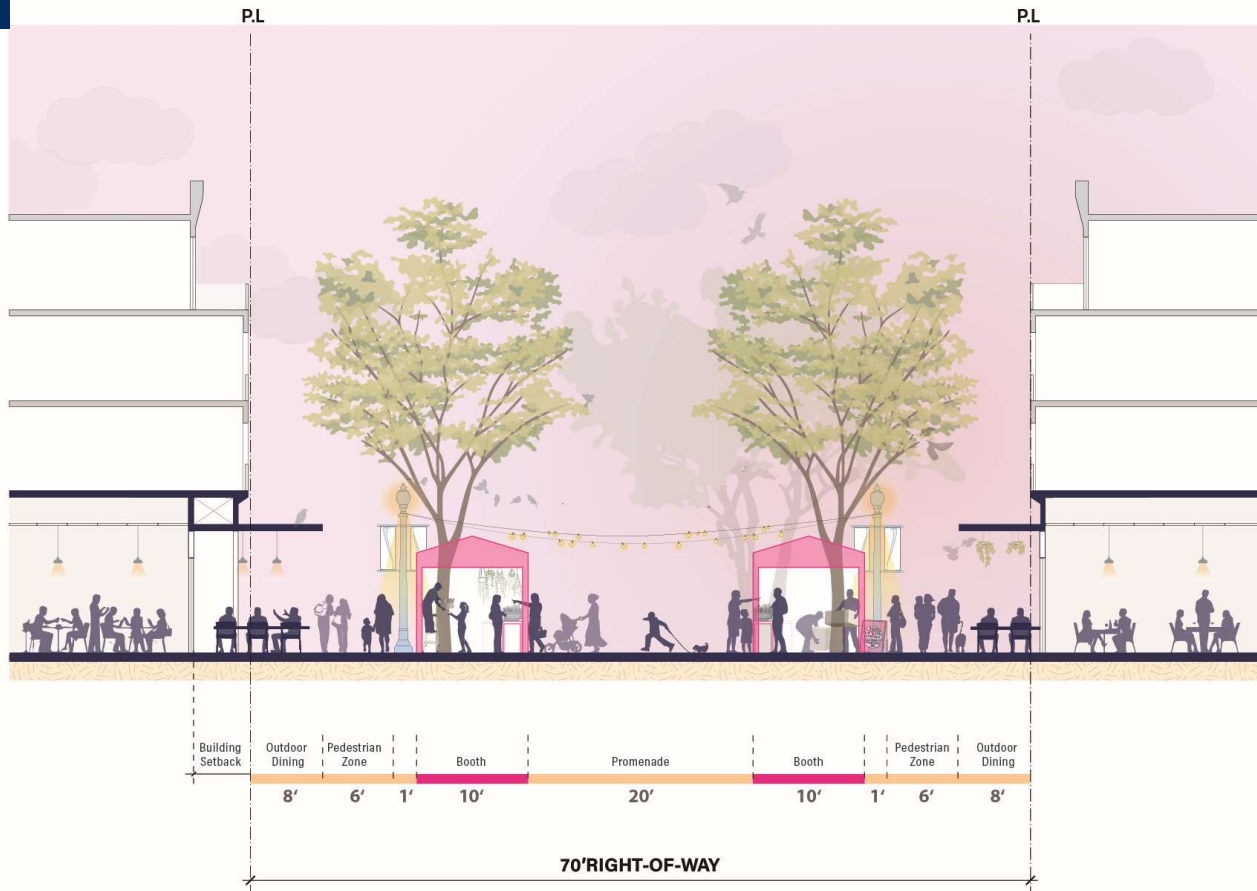
- Arroyo – outdoor dining on the north side, simplified sidewalks
- Britton – resolve merging lanes to gain space for bike lanes
- Define Parking Loss totals

LAUREL STREET

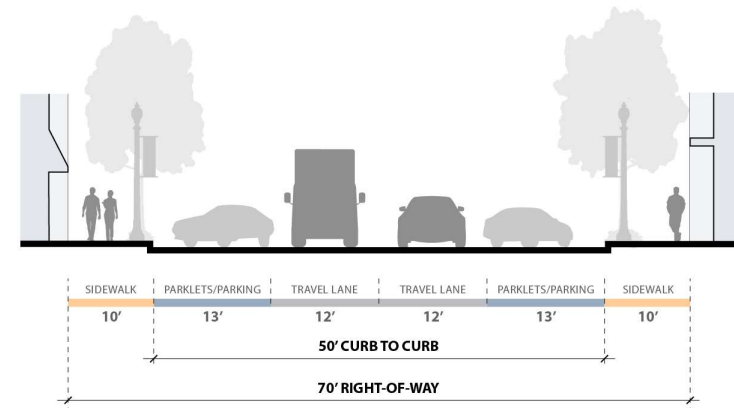
BLOCK 600 & 800 (Looking North)



LAUREL STREET (Festival/ Market Scenario) BLOCK 600 & 800 (Looking North)

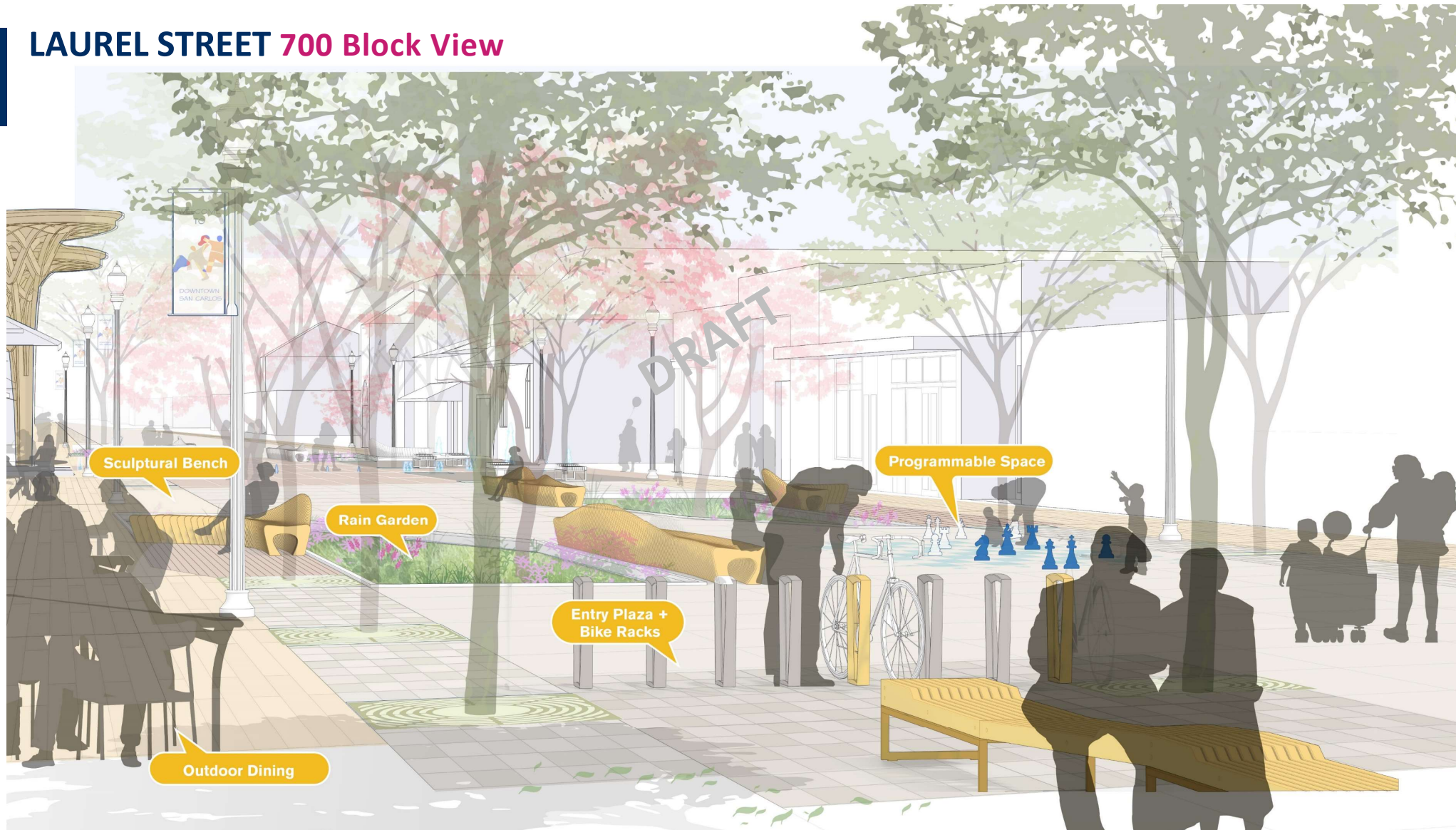


PROPOSED

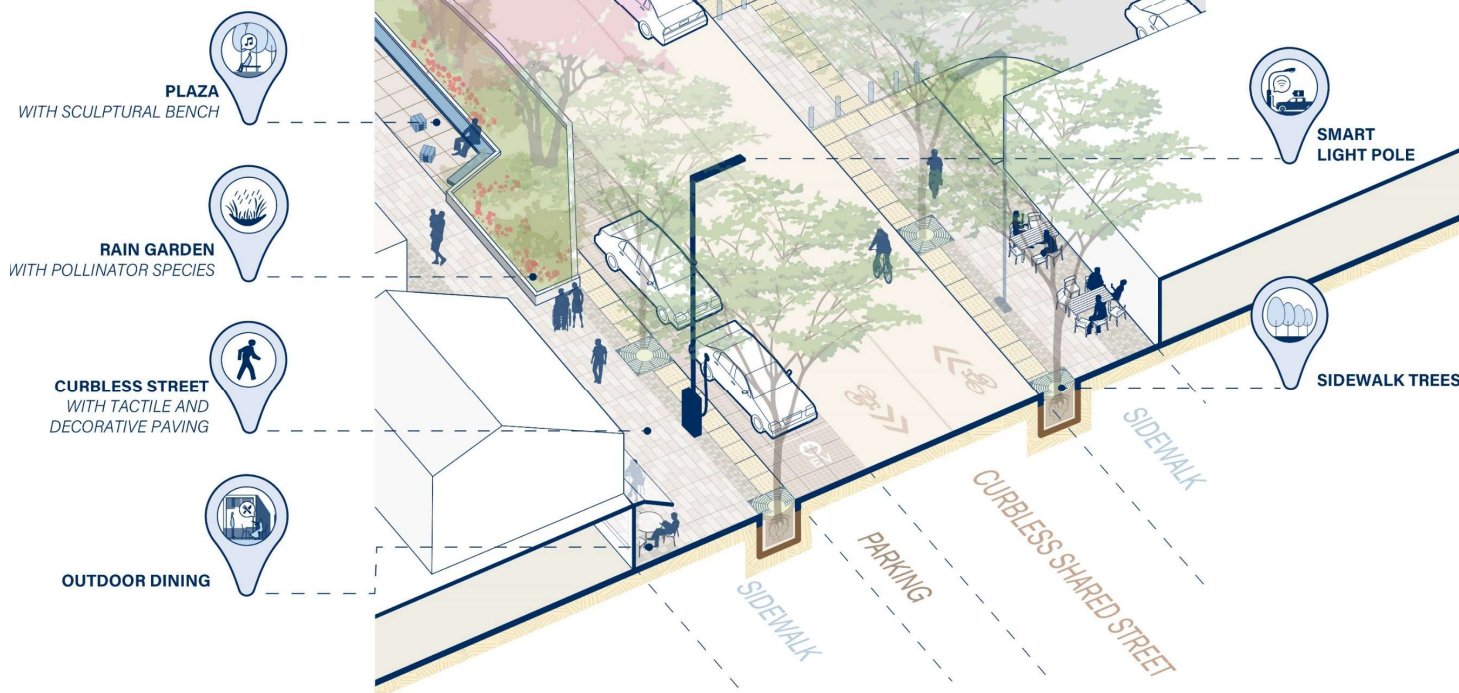


EXISTING
(LOOKING NORTH)

LAUREL STREET 700 Block View

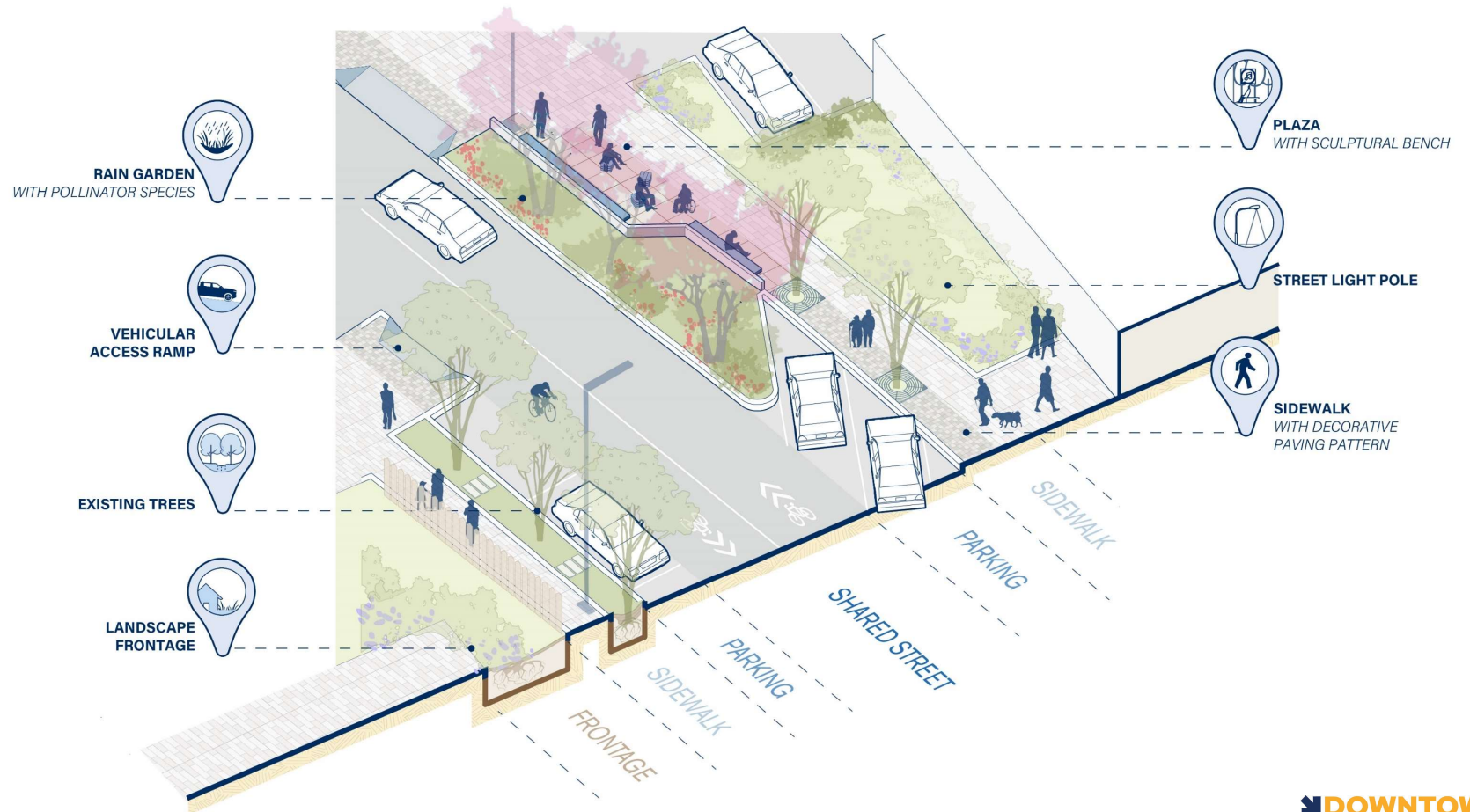


LAUREL STREET DOWNTOWN CORE AXON



LAUREL STREET

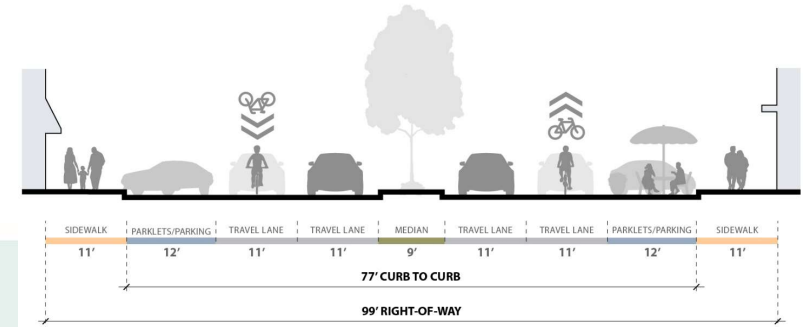
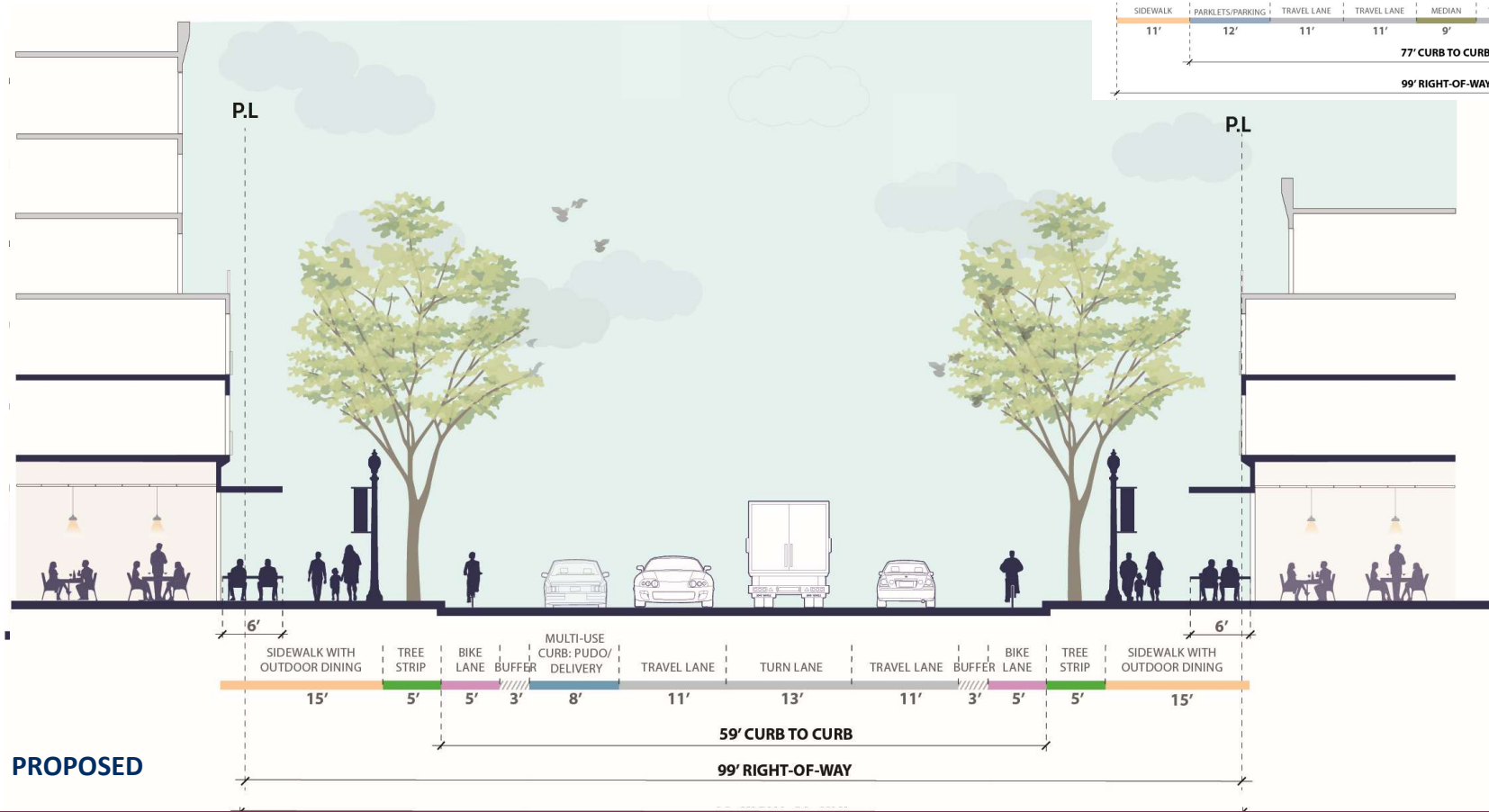
SoLA AXON



SAN CARLOS AVENUE

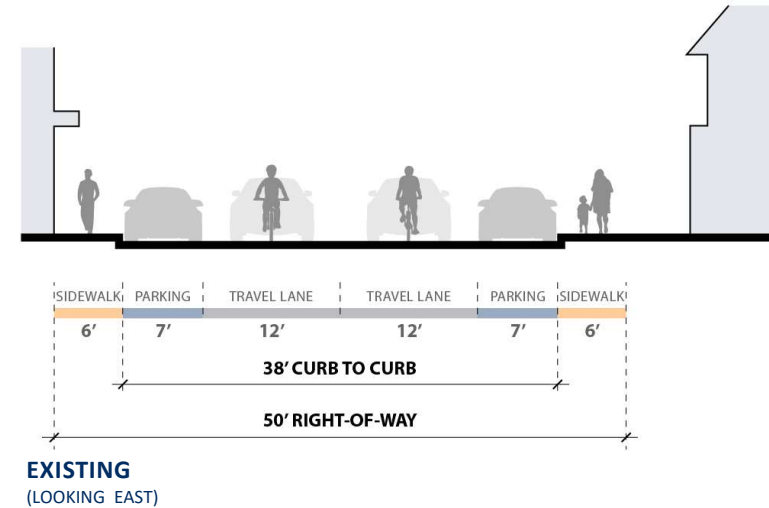
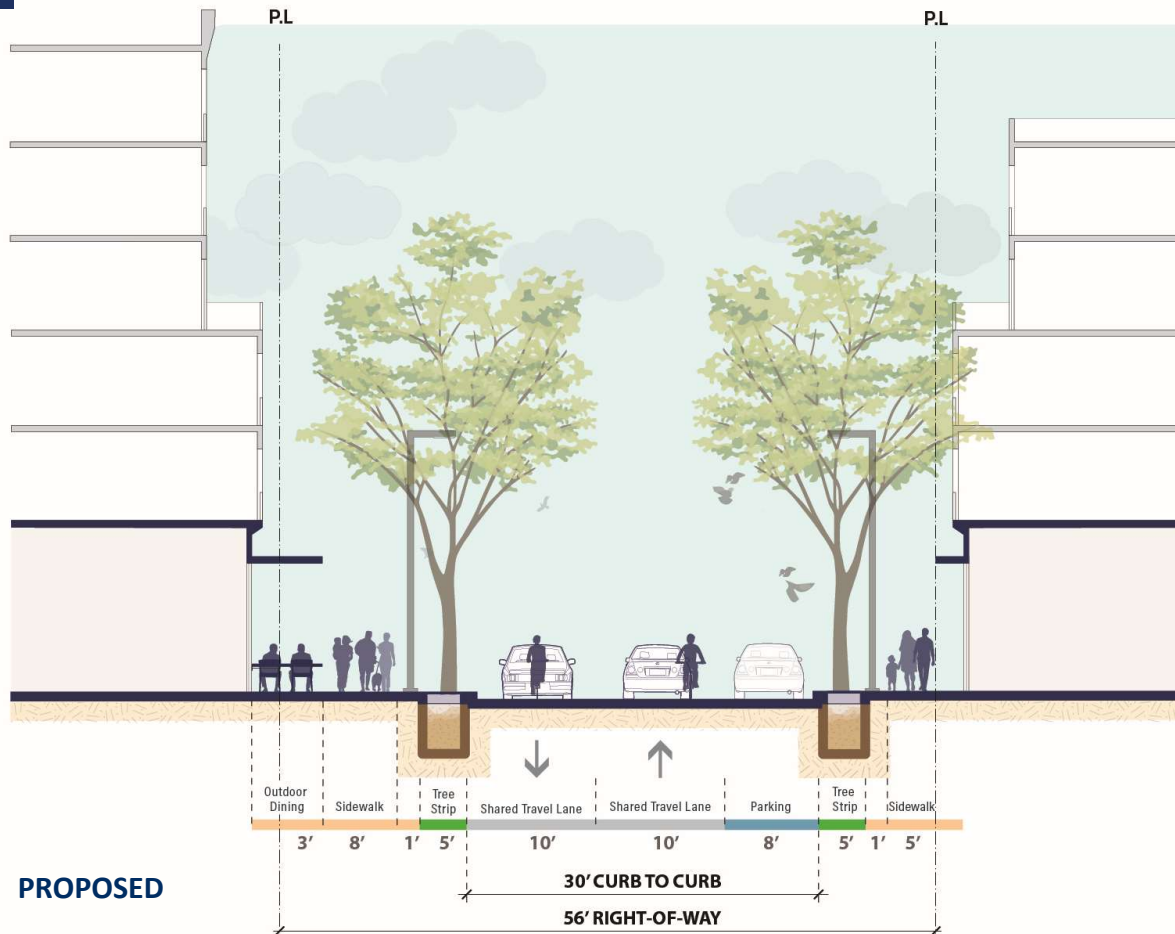
BLOCKS 1100 & 1200

(Looking Towards the Caltrain Station)

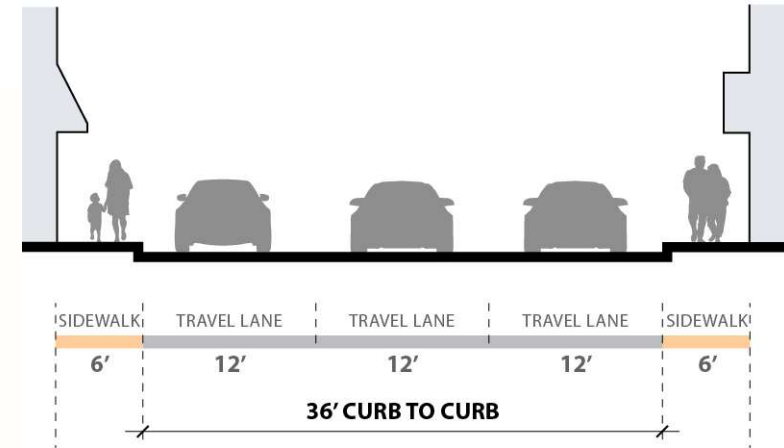
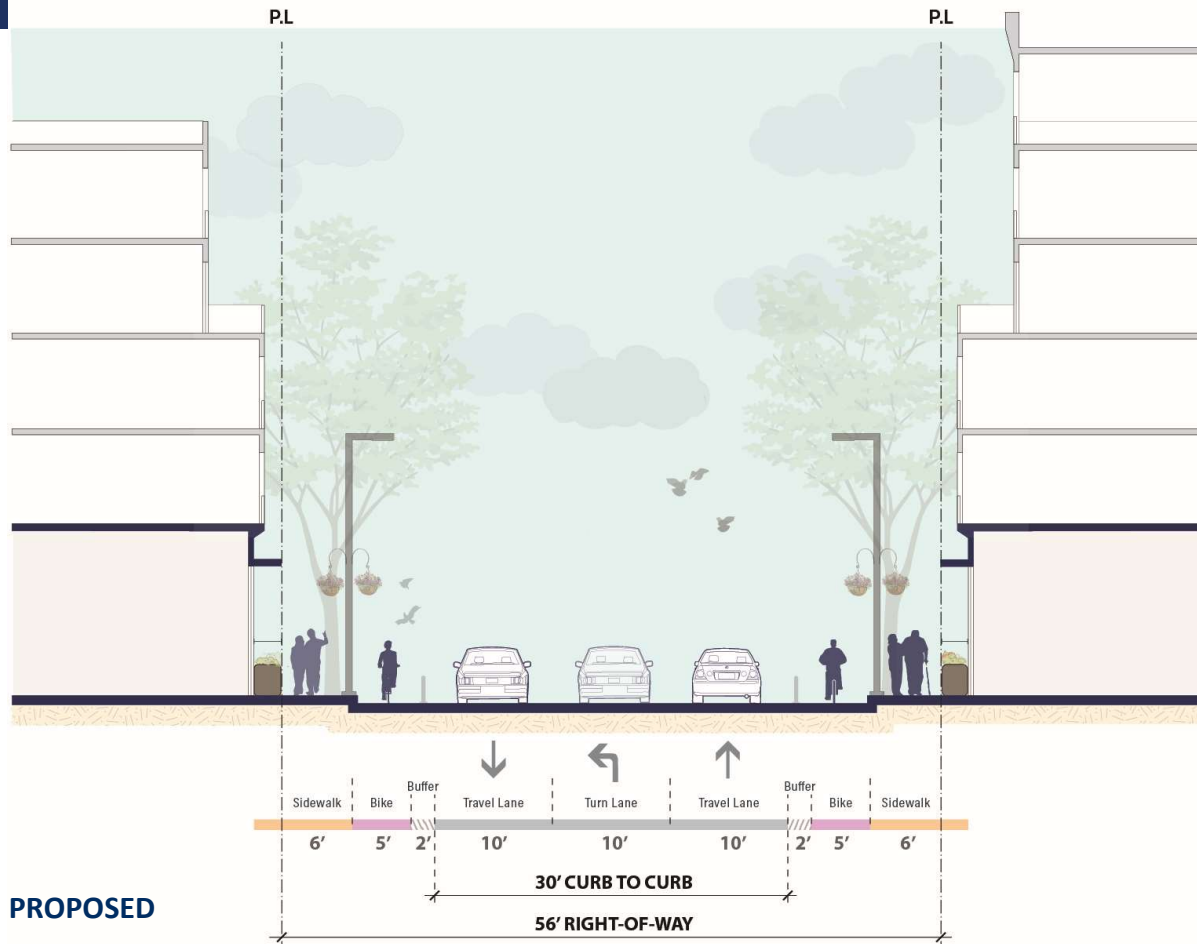


ARROYO AVENUE

(Looking Towards El Camino Real)



BRITTAN AVENUE (Looking East)



EL CAMINO REAL (Looking North)

